

Novel H1N1 (swine) Influenza Update

New York State Department of Health

New York State Hospital
Review and Planning Council
June 4, 2009

Guthrie Birkhead, MD MPH
Deputy Commissioner, Office of Public Health

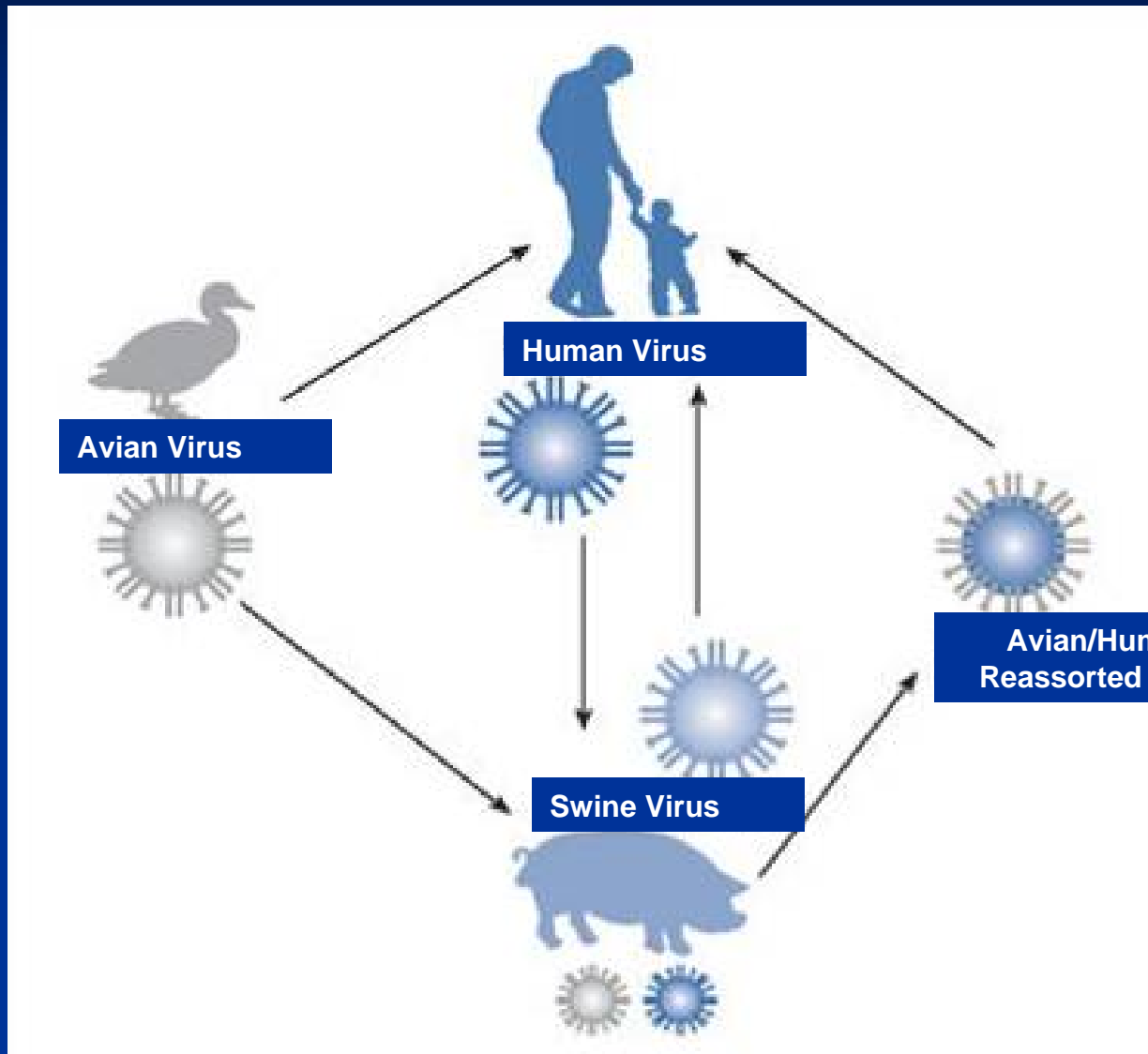
Rapidly Evolving Picture

- Influenza A (H1N1), novel virus
- First reported April 21 in an MMWR on cases in California and Texas; recognized in Mexico
- Virus contains genetic material from Asian swine flu, N. American swine flu, human flu, bird flu
- Virus is **NON-SUB-TYPEABLE** by standard laboratory protocols
 - Only a few labs in the country (CDC, Wadsworth Center) can subtype this virus at this time
 - More labs being given approval to subtype and confirm S-OIV in the coming days
- April 24 - recognition of large outbreak at a school in Queens.

Rapidly Evolving Picture

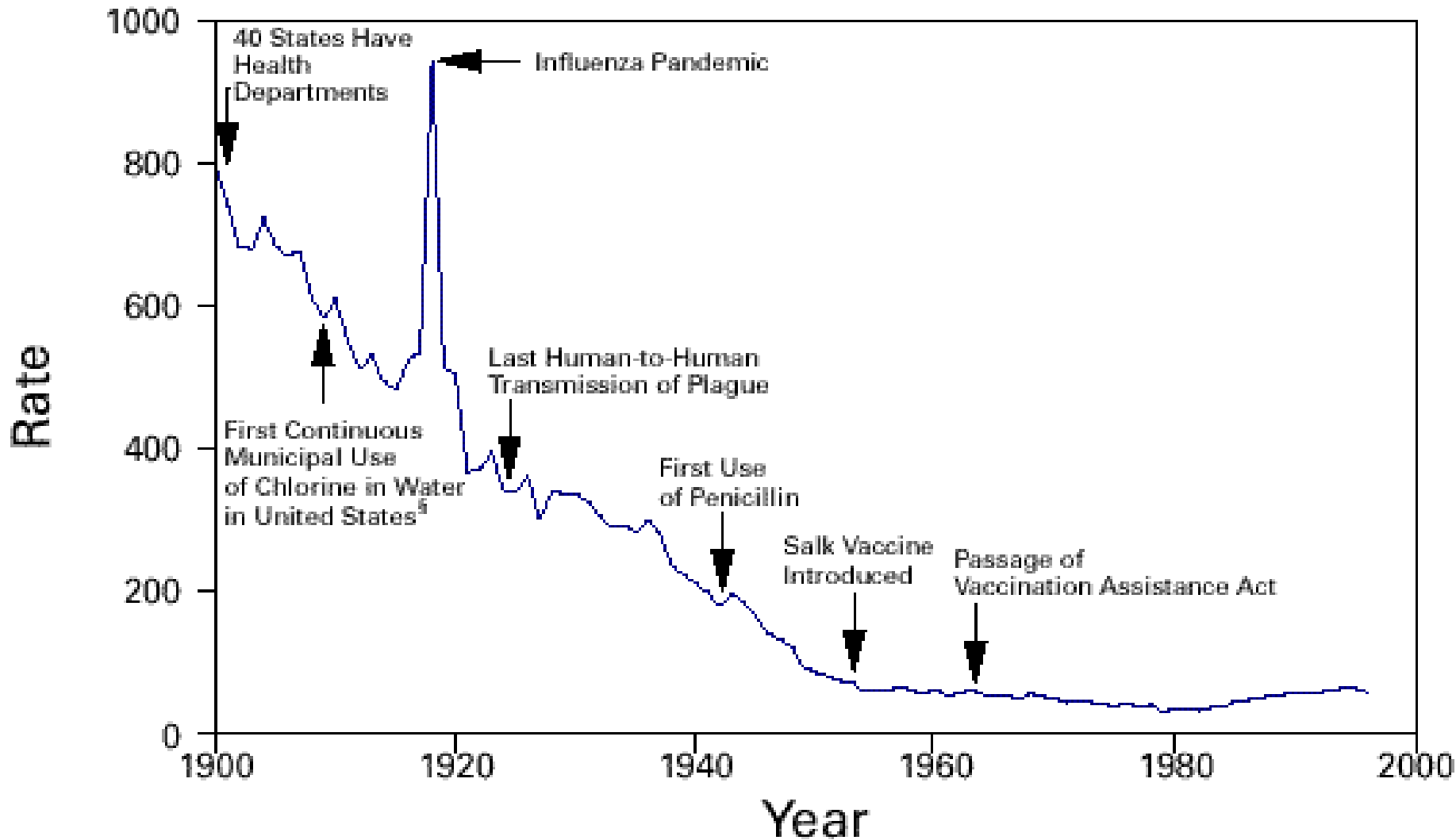
- Remarkable speed of recognition and response.
- Increased understanding of the disease and the events in Mexico.
- Rapidly evolving response from containment to treating like seasonal influenza.
- A lot learned, but a lot still to learn.
- Going forward: hoping for the best, preparing for the worst.
- Increased recognition of the impact of seasonal flu?

Influenza A(H1N1) *Transmission Through Species*



Reassortment in Pigs

FIGURE 1. Crude death rate* for infectious diseases — United States, 1900–1996†



*Per 100,000 population per year.

†Adapted from Armstrong GL, Conn LA, Pinner RW. Trends in infectious disease mortality in the United States during the 20th century. JAMA 1999;281:61–6.

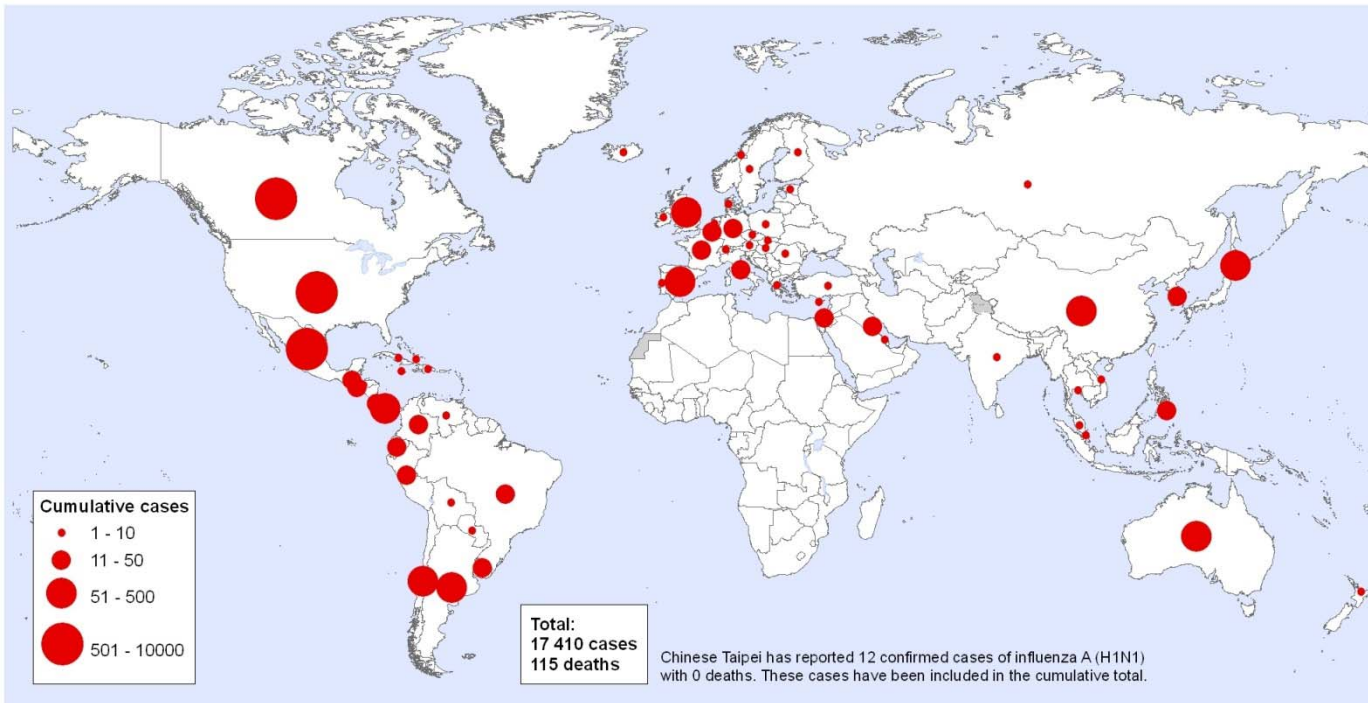
§American Water Works Association. Water chlorination principles and practices: AWWA manual M20. Denver, Colorado: American Water Works Association, 1973.

Novel H1N1 Influenza

Global Picture June 1, 2009

New Influenza A (H1N1),
Number of laboratory confirmed cases as reported to WHO

Status as of 01 June 2009
06:00 GMT



The boundaries and names shown and the designations used on this map do not imply the expression of any opinion whatsoever on the part of the World Health Organization concerning the legal status of any country, territory, city or area or of its authorities, or concerning the delimitation of its frontiers or boundaries. Dotted lines on maps represent approximate border lines for which there may not yet be full agreement.

Map produced: 01 June 2009 06:46 GMT

Data Source: World Health Organization
Map Production: Public Health Information
and Geographic Information Systems (GIS)
World Health Organization



© WHO 2009. All rights reserved

17,410 Cases, 62 countries, 115 deaths.

U.S. Novel H1N1 Influenza

June 1, 2009

- Alabama 84
 - Arkansas 7
 - Alaska 1
 - Arizona 547
 - California 804
 - Colorado 61
 - Connecticut 196
 - Delaware 121
 - Florida 166
 - Georgia 29
 - Hawaii 73
 - Idaho 13
 - Illinois 1103
 - Indiana 146
 - Iowa 71
 - Kansas 79
 - Kentucky* 77
 - Louisiana 122
 - Maine 11
 - Maryland 48
 - Massachusetts 470
 - Michigan 234
 - Minnesota 60
 - Mississippi 16
 - Missouri 36
 - Montana 14
 - Nebraska 43
 - Nevada 102
 - New Hampshire 40
 - New Jersey 74
 - New Mexico 108
 - New York 605
 - N. Carolina 14
 - North Dakota 6
 - Ohio 23
 - Oklahoma 82
 - Oregon 148
 - Pennsylvania 123
 - Rhode Island 14
 - S. Carolina 46
 - S. Dakota 7
 - Tennessee 104
 - Texas 1403
 - Utah 247
 - Vermont 3
 - Virginia 31
 - Washington 575
 - Washington DC 20
 - Wisconsin 1641
 - Wyoming 2
 - West Virginia 3
- **TOTAL 10,053 cases in 51 states (including the District of Columbia), 17 deaths**
 - *Case is resident of KY but currently hospitalized in GA.

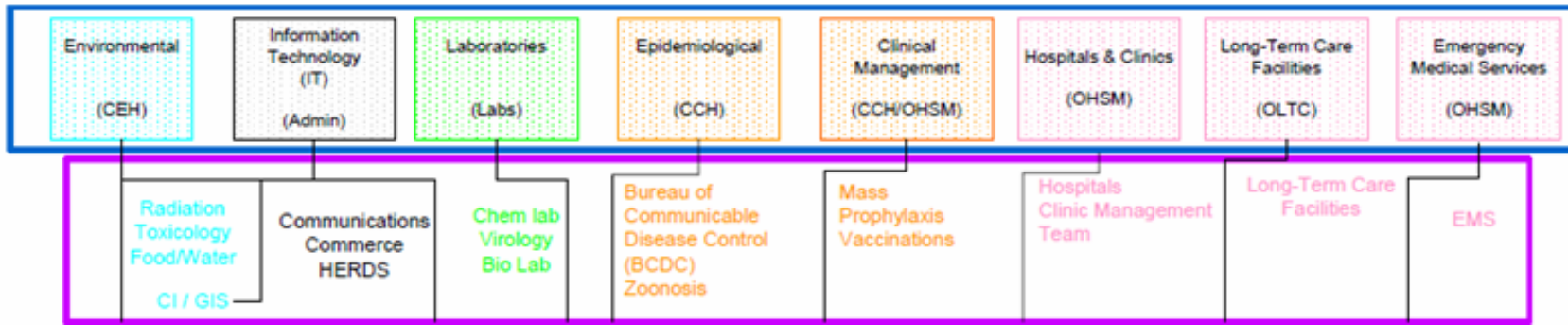
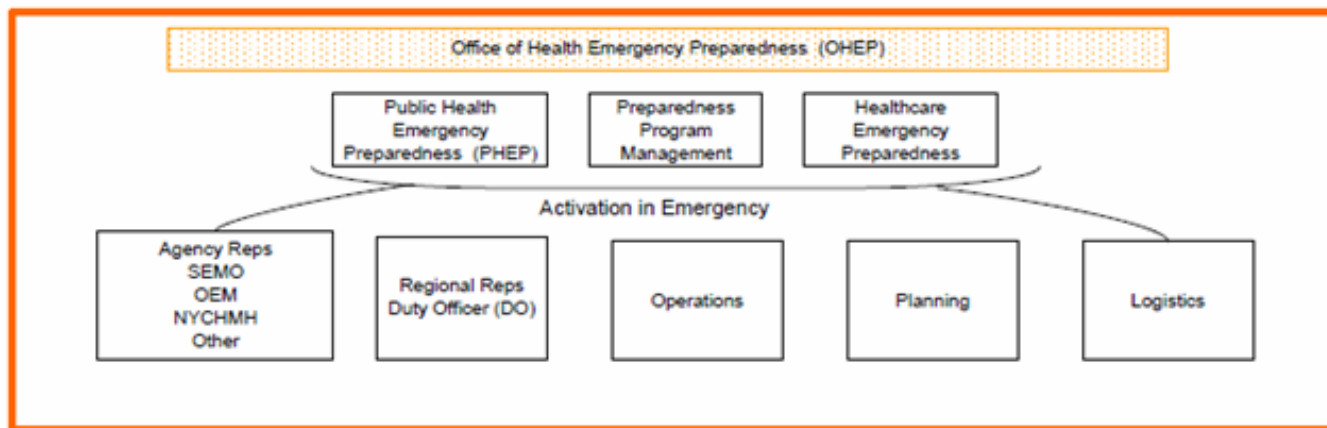
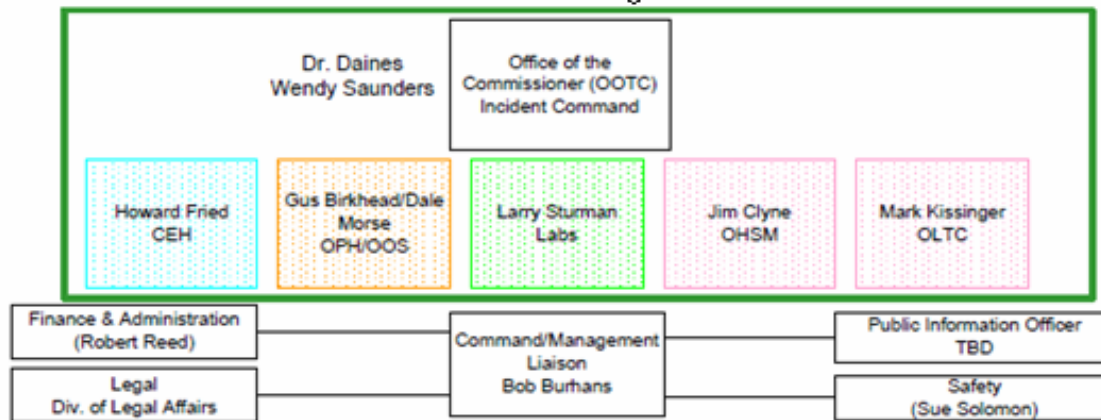
Source: CDC - June 1, 2009,

New York's Multi-Faceted Response

April 25 – Gov. Patterson orders DOH to activate its
Public Health Preparedness Response Plan

- Incident Management System (IMS)
 - Intra and Inter Agency coordination, State/Fed/Local
- Surveillance and Epidemiology
- Laboratory Testing
- Development of targeted guidance for multiple audiences
- Media and Public Communications: 24/7 call center.
- Risk Communications
- Strategic National Stockpile and State MERC
- Legal Review and Analyses

Incident Management System



Inter and Intra Agency Collaboration and Coordination

- Department's Incident Management System
- Daily briefings with representatives of all offices within SDOH and regional offices
- Multiple layers of review and comment to ensure consistency and clarity of responses to multiple parties, using multiple communication mechanisms on an ongoing basis with frequent updates.
- Situation reports at 11AM and 4PM daily.
- Coordination through SEMO & Office of Homeland Security
- SED/ OMH/OASAS/ SOFA/ OCFS/ OGS communications and coordination

Epidemiology and Surveillance

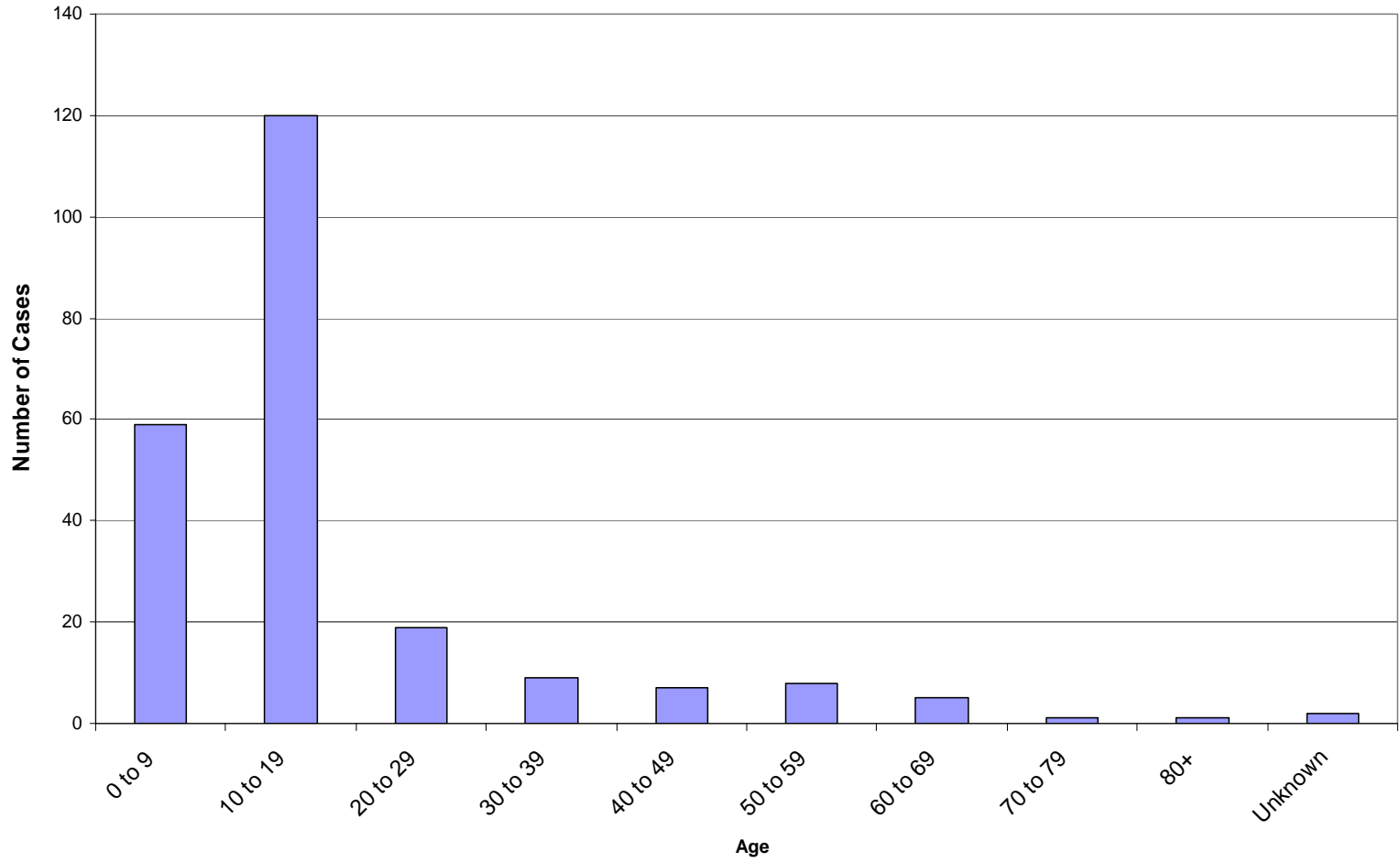
Objectives:

- Identify new geographic areas
- Identify severe illness
- Identify outbreaks/clusters

Activities:

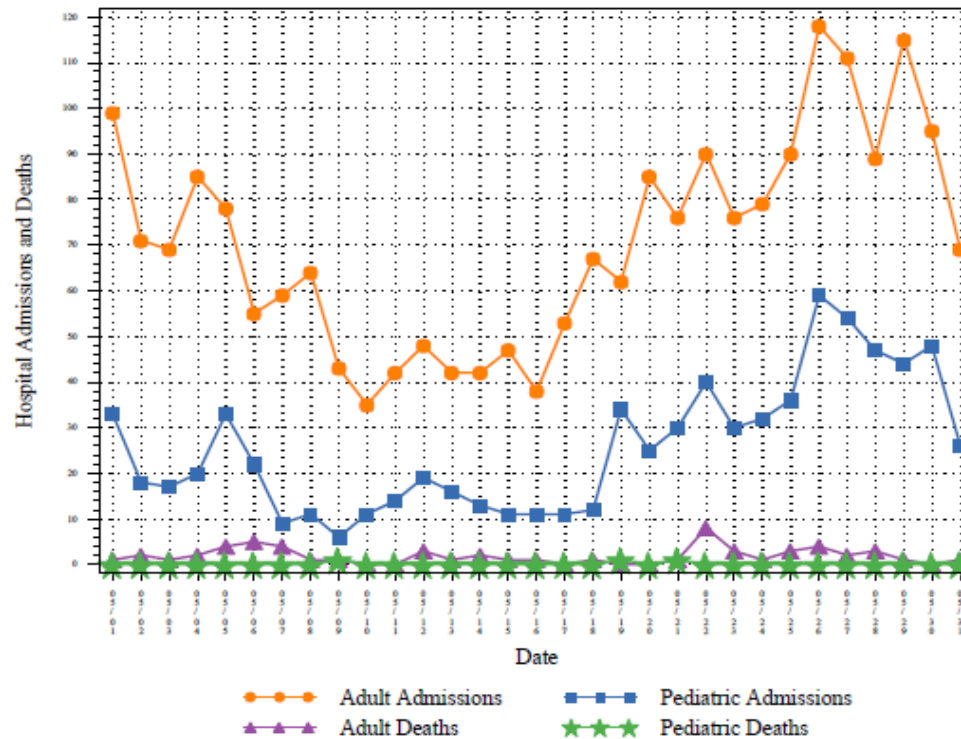
- Criteria for submission of specimens to Wadsworth laboratory -
- CDC Case Definition
- Screening form/report form/CDESS data entry system
- Tracking and daily updates
- Syndromic Surveillance – ED visits, antiviral prescriptions
- CDC Mortality reporting
- Hospitalizations – Severe Respiratory Disease Surveillance
- Epidemiologic Studies – school district outbreak

H1N1 (Swine) Influenza A Cases, NYS excluding NYC, 2009

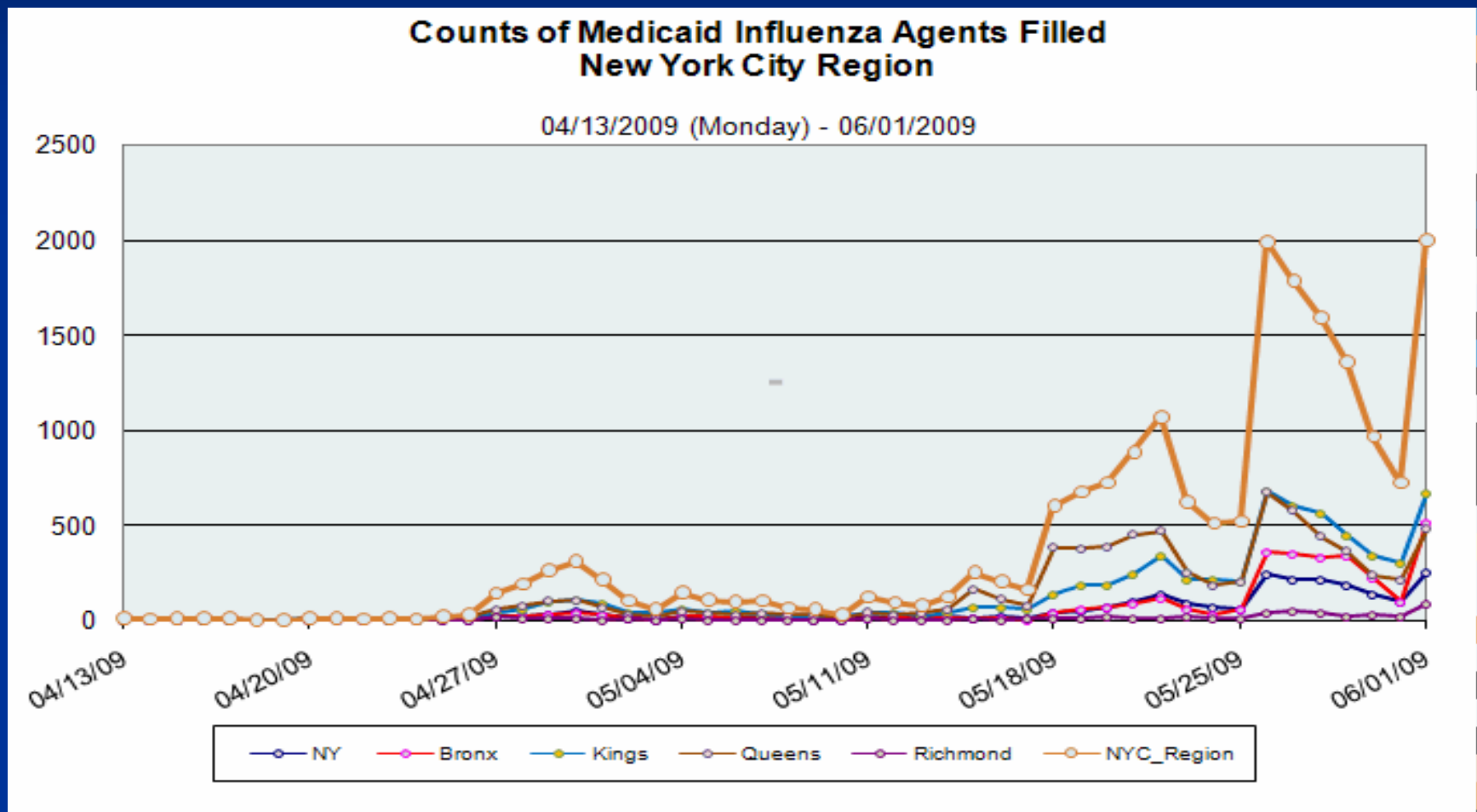


Hospital Admissions and Deaths Due to Acute Febrile Respiratory Illness, New York State May 31, 2009

Hospital Admissions and Deaths Due to Acute Febrile Respiratory Illness
New York State, as of 31MAY2009:19:40:11



Medicaid Influenza Agents Filled New York City Region through June 1, 2009

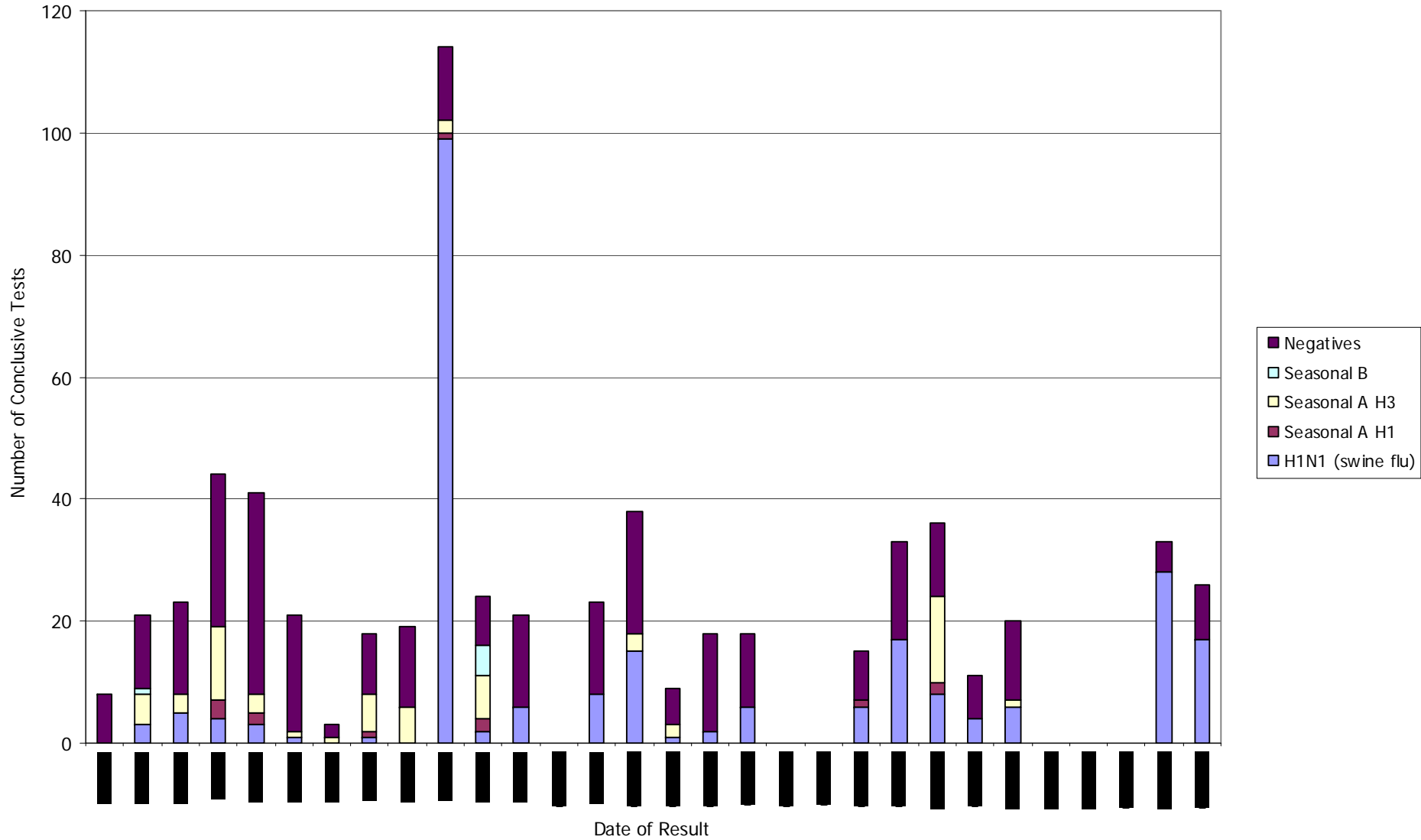


Laboratory Testing

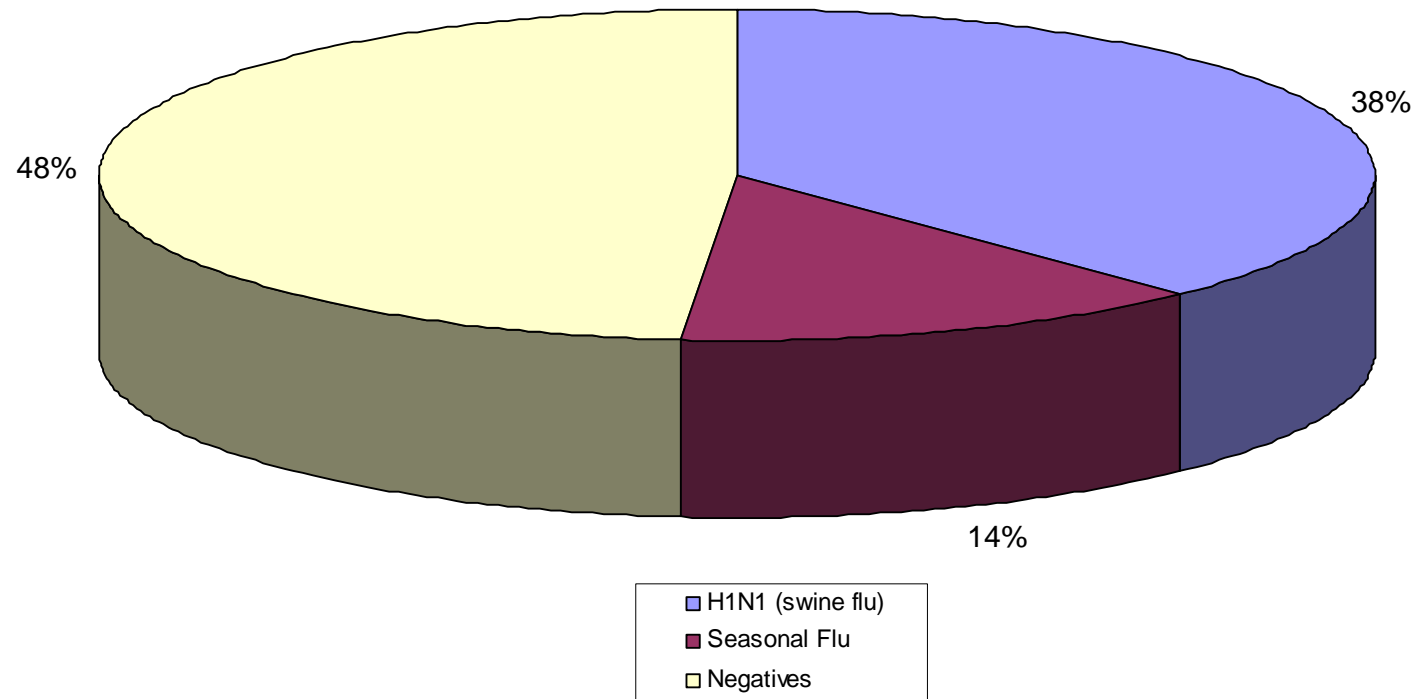
- Wadsworth Laboratory is a WHO Collaborating Laboratory for Influenza Testing
- Receipt of CDC Reagents
- Quality assurance testing
- Interaction/collaboration and coordination with regional testing labs, including validating commonly used influenza subtyping methodology
- Software development for testing specimens
- Coordination with clinical labs

Influenza Testing, NYSDOH Wadsworth Laboratory

4/28/09 to 5/27/09, by date of test result



H1N1 (Swine) Influenza vs. Seasonal Influenza, Wadsworth Testing, 4/27/09 to 5/27/09



Development of Targeted Guidance for Multiple Audiences

- Local Health Departments
- Hospitals, clinics
- Long Term Care Facilities
- EMS Agencies
- Infection Control
- Information for School Officials and Parents
 - Elementary and Secondary Schools
 - Day care centers
 - Colleges, Universities and Boarding Schools
- Physician Guidance including clinical Guidelines for Testing and Treatment
- Bio-safety Guidelines for laboratories
- Guidance for high risk populations including migrant communities, border and tribal health; HIV positive individuals and persons over 50; pregnant women.

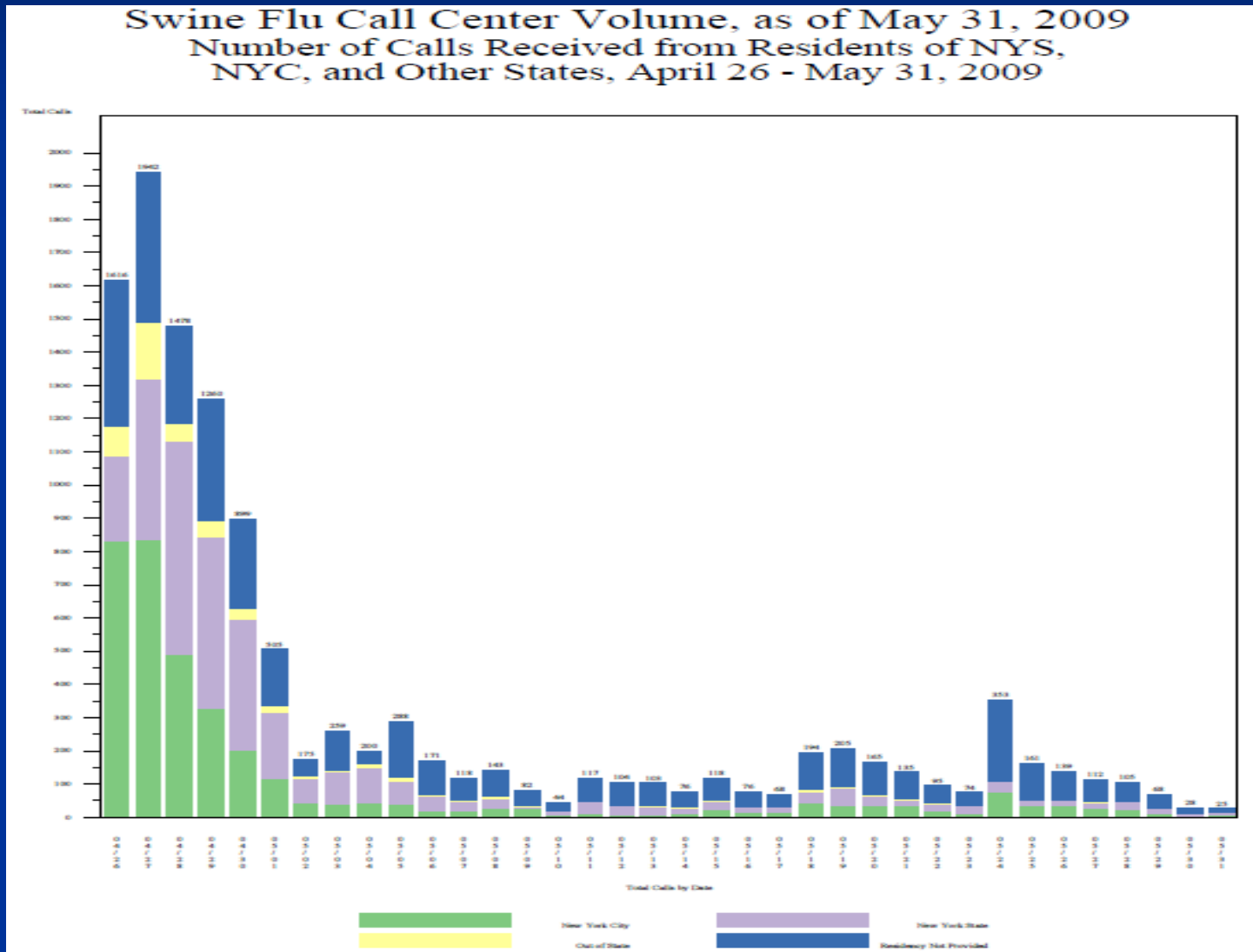
Media and Public Communications

- Daily press briefings and advisories
- Daily updates on SDOH public website
- Governor and Commissioner press releases
- H1N1 and HPN updated daily. >20,000 distribution
- Press, radio and television interviews
- Call center for the general public available 24/7

The screenshot shows the New York State Department of Health website. At the top, it says "NEW YORK STATE" with a map of the state. Below that is the "Department of Health" logo and the tagline "Information for a Healthy New York". The page is divided into several sections:

- Governor Paterson:** David A. Paterson, Governor. Includes a link to the "Governor's home page".
- Commissioner Daines:** Richard F. Daines, M.D., Commissioner. Includes links to "Home page" and "2009 Press Releases".
- Current Issues:** A list of topics including "H1N1 Flu (Swine Flu)", "EMS/EMT", "American Recovery and Reinvestment Act", and "Healthy Steps to Albany".
- Health News:** A section with a green background titled "H1N1 Flu (Swine Flu)". It contains the text: "For questions, call the Department's hotline at 1-800-808-1987. New York City residents should call 311." Below this are two bullet points: "H1N1 Flu" and "Press Releases".
- Press Release:** Dated "MAY 5, 2009", titled "Governor Paterson Announces One New Confirmed H1N1 Case". The text reads: "Governor David A. Paterson today announced that specimen testing performed Monday by the New York State Department of Health Laboratories resulted in one new confirmed case of H1N1 (swine flu)."

Swine Flu Call Center Volume as of May 31, 2009: New York State, New York City and Other States



Risk Communications

- OCFS and Day Care provider alerts and guidance
- Partners in Preparedness newsletter
- Educational materials/ Fact Sheets
- NYSDOH Resources
- Employee Health Resources
- Resources for the visually handicapped and hearing impaired

Strategic National Stockpile and State Medical Emergency Response Cache (MERC)

- Receive 25% of the SNS antiviral medications and N-95 masks
- Surveillance of antivirals in hospitals and pharmaceutical distributors/chain pharmacies
- Distribution of assets to 51 New York State counties

New York State Strategic National Stockpile (SNS)

- NYSDOH maintains 4 sites for the State's Medical Emergency Response Cache (MERC)
- ~3.1 million treatment course of antivirals, plus masks, etc.
- The Federal SNS Assets were received at one of the 8 identified RSS sites on Tuesday, April 28th;
- The decision was made to “push” these assets out to the 57 counties; allocation plan was developed;
- The assets began deployment on Wednesday, May 6th, and deliveries were completed on Friday, May 8th



Legal Review and Analysis

- Emergency Use Authorization Reviews
- Review of laws guiding school and day care closures
- Review of authority and responsibilities in emergent situations.

What is next?

- **Capture Lessons Learned from this “live fire” exercise.**
 - Good news: mild disease, sensitive to antivirals, vaccine do-able.
 - Cautions: ?increased virulence; ?antiviral resistance; ?vaccine challenges
- **Not back to business as usual: heightened awareness.**
- **Monitoring and surveillance through the summer into the fall.**
- **Routinize reporting and laboratory testing.**
- **Further development of protocols for:**
 - School closure
 - Social distancing
 - Inter agency coordination
 - Communication, Communication, Communication
- **Prepare for possible mass vaccination campaigns in the Fall**
- **Learn lessons for seasonal influenza**

Public Information

- NYSDOH Swine Flu Hotline

- 1-800-808-1987

- NYSDOH Swine Flu Website

- nyhealth.gov/diseases/communicable/influenza/seasonal/swine_flu

Acknowledgements

- Office of the Commissioner
 - Richard Daines
 - Wendy Saunders
 - Amy Nickson
- Epidemiology
 - Perry Smith
 - Kim Noyes
 - Bryan Cherry
 - Bryon Backenson
 - Lora Santilli
 - Joan Cleary-Miron
- Wadsworth Laboratory
 - Larry Sturman
 - Jill Taylor
 - Kirsten St. George
- Health Emergency Preparedness
 - Bob Burhans
 - Mike Primeau
 - Kris Smith
- Information Systems Health Statistics Group
 - Ivan Gotham
- Centers for Disease Control
 - Evan Mayfield
- Public Affairs
 - Diane Mathis
 - Claire Pospisil
- Office of Health Systems
 - Jim Clyne
 - Mary Ellen Hennessey
 - Rick Cook
- Office of Science
 - Dale Morse
- Office of Long Term Care
 - Mark Kissinger
 - Carla Williams
- Office of Public Health
 - Phyllis Silver
- Division of Legal Affairs
 - Barb Asheld
 - Mary Buckley
- Division of Administration
 - Bob Reed
- NYSDOH Regional Offices
- Center for Environmental Health
 - Ed Horn