

**HTNYS *Boardroom Essentials* video series presents:**

# **The Trustee's Role in Health Equity**

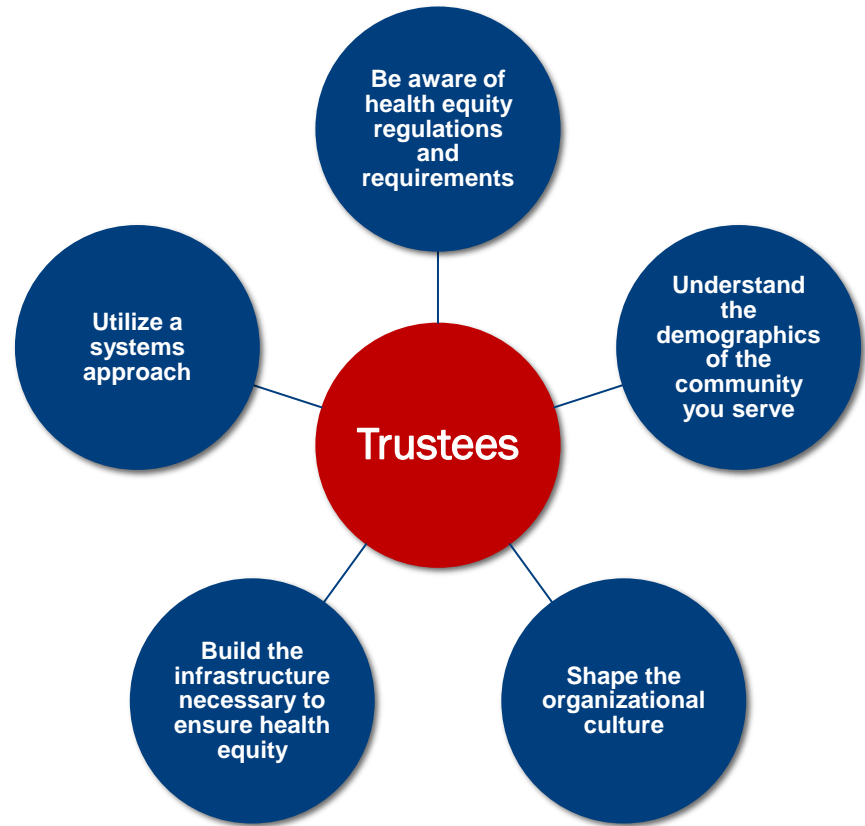
**Kathleen Rauch, Vice President, Quality  
Advocacy, Research and Innovation**



What is your health equity role  
as a trustee?



Your role as a trustee is to guide and support your organization's health equity efforts and initiatives by taking these actions.



# Build the infrastructure

## Establish

Health Equity Governance Committee  
Chief Diversity and/or Health Equity Officer  
Health Equity Improvement Plan

## Support

Adoption of the CLAS Standards  
Data Collection and Analysis  
EHR Investments  
Partnerships with Community Based Organizations

## Require

Data to be presented regularly in a format that is meaningful to the Board  
Updates about the organization's progress to reduce identified disparities

# Understand your community



# Shaping the culture

1

Make health equity a strategic priority.

Create a Board health equity governance committee.

Require regular updates to the full Board.

2

Establish a culture of equity.

Motivate leadership and providers to address disparities.

3

Support transparency *(include health equity in boardroom conversations)*.

4

Encourage creation of Patient and Family Advisory Councils.

# Utilize a systems approach



Encourage cultural competency  
and humility



Apply a high-reliability systems  
approach and health equity lens  
to currently used patient safety  
methodologies



Use incident reporting systems  
to identify and address  
disparities

CMS Quality Reporting

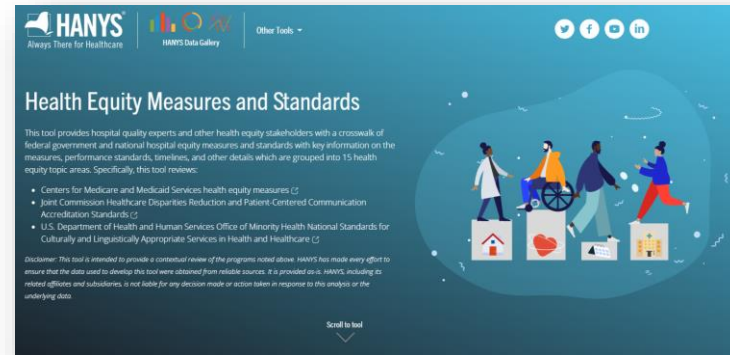
NYS Health Equity Impact Assessment

Joint Commission Accreditation Standards

Joint Commission Certification

Magnet Designation HE Standards

Health equity regulations and requirements are constantly changing. Utilize available resources to stay up-to-date.



[Click](#) to access this interactive tool.



# HANYS' Health Equity Task Force Quick Guide

Quick guide

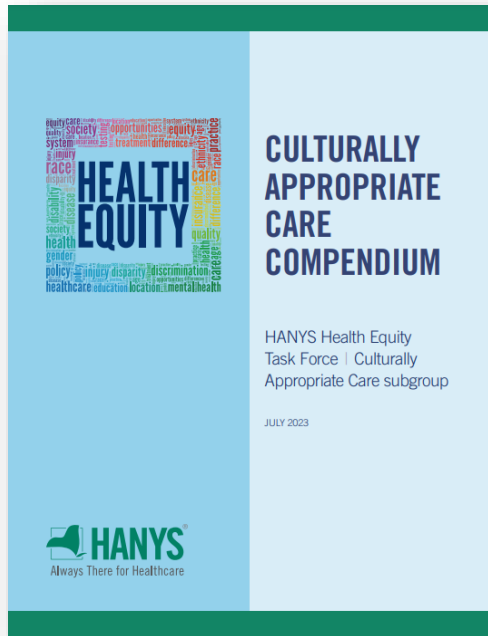


Advancing health equity: A moral and business imperative

[Click](#) to view the full guide.



# HANYS' Health Equity Task Force Appropriate Care Compendium



[Click](#) to view the full compendium.

# Acronyms

- CLAS - Culturally and Linguistically Appropriate Services
- REaL - Race, Ethnicity and Language
- SOGI - Sexual Orientation, Gender Identification
- SDoH - Social Determinants of Health

# Resources

- Achieving Health Care Equity Requires a Systems Approach, (2023), Baker, D. The Joint Commission Journal on Quality and Patient Safety
- Health Equity Crosses All Board Responsibilities, (nd), Summers, L. AHA Trustee Services
- Diversity and Inclusion in Leadership and Governance, (2021), AHA Institute for Diversity and Health Equity

**Kathleen Rauch**  
**krauch@hanys.org**  
**(518) 431-7718**

**The Statewide Voice for New York's Hospitals and Health Systems**



# HTNYS Staff

**Nicholas Henley**

**Executive Director, HTNYS; Vice President, External Affairs, HANYS**

**[nhenley@hanys.org](mailto:nhenley@hanys.org)**

**518.431.7721**

**Kristen Phillips**

**Director, Trustee Education**

**[kphillip@hanys.org](mailto:kphillip@hanys.org)**

**518.431.7713**

